

SPECIFICATION						
CAPACITY	20,000LBS					
FOUR COLUMNS C/W HYDRAULIC CYLINDERS						
SAFETY DEVICES ON EACH COLUMN (MECHANICAL/AIR)						
DUAL POWER UNITS C/W EL. MOTORS	STANDARD	2 x 2HP, 3PH, 230/460V				
	OPTIONAL	2 x 2HP, 3PH, 575V				
	OPTIONAL	2 x 2HP, 1PH, 230V				
SPEED OF RISE	60 SEC.					
RUNWAY WIDTH	24"			DISTANCES		
RUNWAY HEIGHT	7-1/2"			"A"	"B"	"C"
RUNWAYS LENGTH	MODEL: PK20-4-20	20' LONG	285"	232 <sup>7</sup> / <sub>8</sub> "	244 <sup>7</sup> / <sub>8</sub> "	
	MODEL: PK20-4-21	21' LONG	297"	244 <sup>7</sup> / <sub>8</sub> "	256 <sup>7</sup> / <sub>8</sub> "	
	MODEL: PK20-4-22	22' LONG	309"	256 <sup>7</sup> / <sub>8</sub> "	268 <sup>7</sup> / <sub>8</sub> "	
	MODEL: PK20-4-23	23' LONG	321"	268 <sup>7</sup> / <sub>8</sub> "	270 <sup>7</sup> / <sub>8</sub> "	
	MODEL: PK20-4-24	24' LONG	333"	270 <sup>7</sup> / <sub>8</sub> "	282 <sup>7</sup> / <sub>8</sub> "	
	MODEL: PK20-4-25	25' LONG	345"	282 <sup>7</sup> / <sub>8</sub> "	294 <sup>7</sup> / <sub>8</sub> "	
	MODEL: PK20-4-26	26' LONG	357"	294 <sup>7</sup> / <sub>8</sub> "	316 <sup>7</sup> / <sub>8</sub> "	
	MODEL: PK20-4-27	27' LONG	369"	316 <sup>7</sup> / <sub>8</sub> "	328 <sup>7</sup> / <sub>8</sub> "	
	MODEL: PK20-4-28	28' LONG	381"	328 <sup>7</sup> / <sub>8</sub> "	340 <sup>7</sup> / <sub>8</sub> "	
	MODEL: PK20-4-29	29' LONG	393"	340 <sup>7</sup> / <sub>8</sub> "	352 <sup>7</sup> / <sub>8</sub> "	
MODEL: PK20-4-30	30' LONG	405"	352 <sup>7</sup> / <sub>8</sub> "	364 <sup>7</sup> / <sub>8</sub> "		
INSIDE COLUMN CLEARANCE	132"					
OVERALL LIFTING HEIGHT	67-1/4"					
OVERALL HEIGHT	12'-2"					
OVERALL WIDTH	12'-6 1/4"					
OPTIONAL - ROLLING JACKING BEAM						

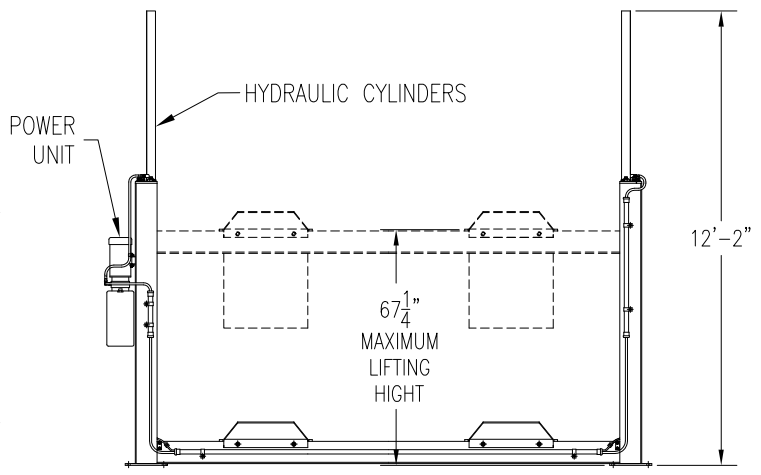
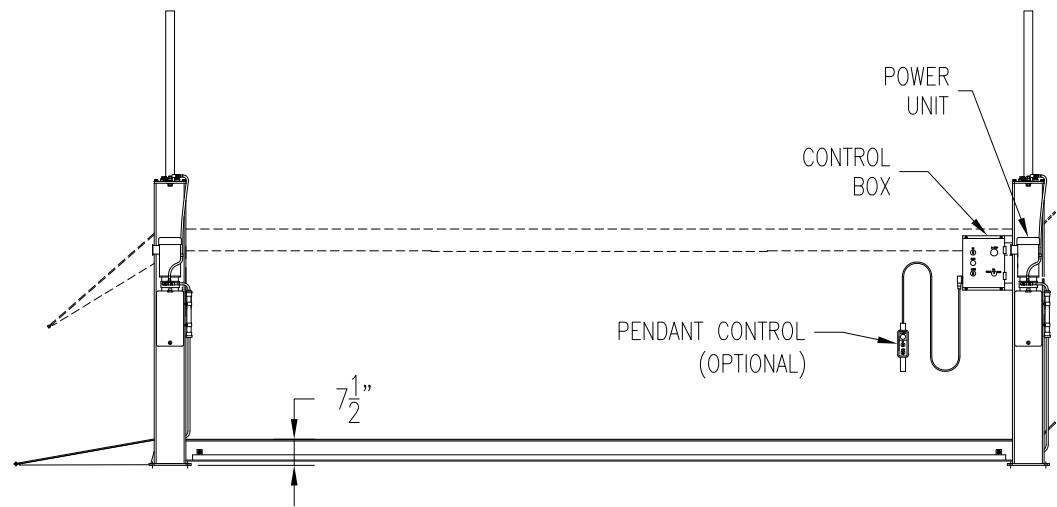
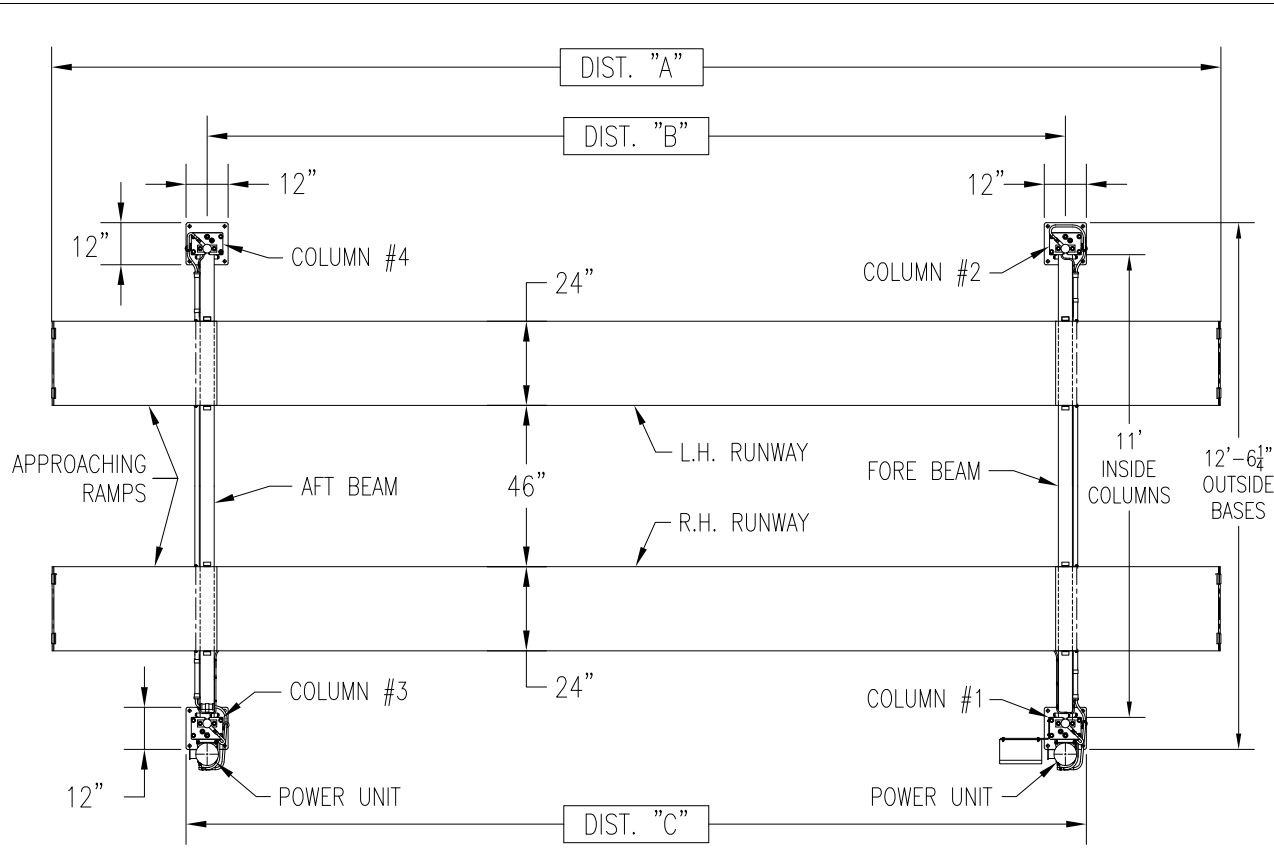


FIG.01



SPECIFICATION						
CAPACITY	20,000LBS					
FOUR COLUMNS C/W HYDRAULIC CYLINDERS						
SAFETY DEVICES ON EACH COLUMN (MECHANICAL/AIR)						
DUAL POWER UNITS C/W EL. MOTORS	STANDARD	2 x 2HP, 3PH, 230/460V				
	OPTIONAL	2 x 2HP, 3PH, 575V				
	OPTIONAL	2 x 2HP, 1PH, 230V				
SPEED OF RISE	60 SEC.					
RUNWAY WIDTH	24"			DISTANCES		
RUNWAY HEIGHT	7-1/2"			"A"	"B"	"C"
RUNWAYS LENGTH	MODEL: PK20-4-21	21' LONG	33 <sup>5</sup> / <sub>8</sub> "	244 <sup>7</sup> / <sub>8</sub> "	256 <sup>7</sup> / <sub>8</sub> "	
	MODEL: PK20-4-22	22' LONG	34 <sup>5</sup> / <sub>8</sub> "	256 <sup>7</sup> / <sub>8</sub> "	268 <sup>7</sup> / <sub>8</sub> "	
	MODEL: PK20-4-23	23' LONG	35 <sup>7</sup> / <sub>8</sub> "	268 <sup>7</sup> / <sub>8</sub> "	270 <sup>7</sup> / <sub>8</sub> "	
	MODEL: PK20-4-24	24' LONG	36 <sup>9</sup> / <sub>8</sub> "	270 <sup>7</sup> / <sub>8</sub> "	282 <sup>7</sup> / <sub>8</sub> "	
	MODEL: PK20-4-25	25' LONG	39 <sup>1</sup> / <sub>8</sub> "	282 <sup>7</sup> / <sub>8</sub> "	294 <sup>7</sup> / <sub>8</sub> "	
	MODEL: PK20-4-26	26' LONG	40 <sup>5</sup> / <sub>8</sub> "	294 <sup>7</sup> / <sub>8</sub> "	316 <sup>7</sup> / <sub>8</sub> "	
	MODEL: PK20-4-27	27' LONG	41 <sup>5</sup> / <sub>8</sub> "	316 <sup>7</sup> / <sub>8</sub> "	328 <sup>7</sup> / <sub>8</sub> "	
	MODEL: PK20-4-28	28' LONG	42 <sup>7</sup> / <sub>8</sub> "	328 <sup>7</sup> / <sub>8</sub> "	340 <sup>7</sup> / <sub>8</sub> "	
	MODEL: PK20-4-29	29' LONG	43 <sup>9</sup> / <sub>8</sub> "	340 <sup>7</sup> / <sub>8</sub> "	352 <sup>7</sup> / <sub>8</sub> "	
MODEL: PK20-4-30	30' LONG	45 <sup>1</sup> / <sub>8</sub> "	352 <sup>7</sup> / <sub>8</sub> "	364 <sup>7</sup> / <sub>8</sub> "		
INSIDE COLUMN CLEARANCE	132"					
OVERALL LIFTING HEIGHT	67-1/4"					
OVERALL HEIGHT	12'-2"					
OVERALL WIDTH	12'-6 1/4"					
OPTIONAL - ROLLING JACKING BEAM						

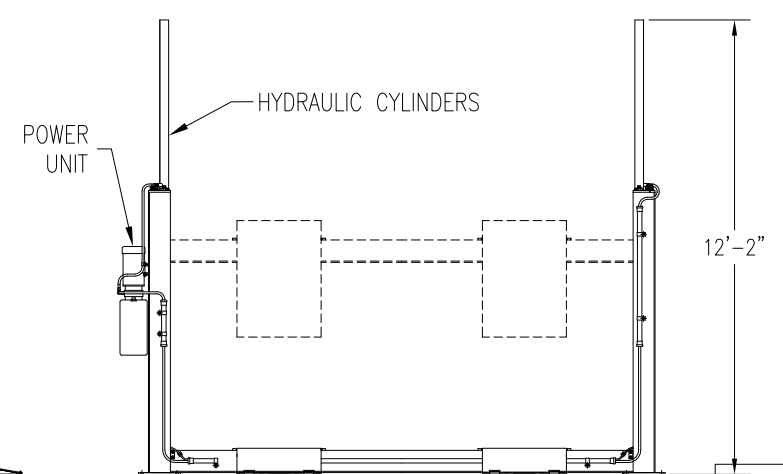
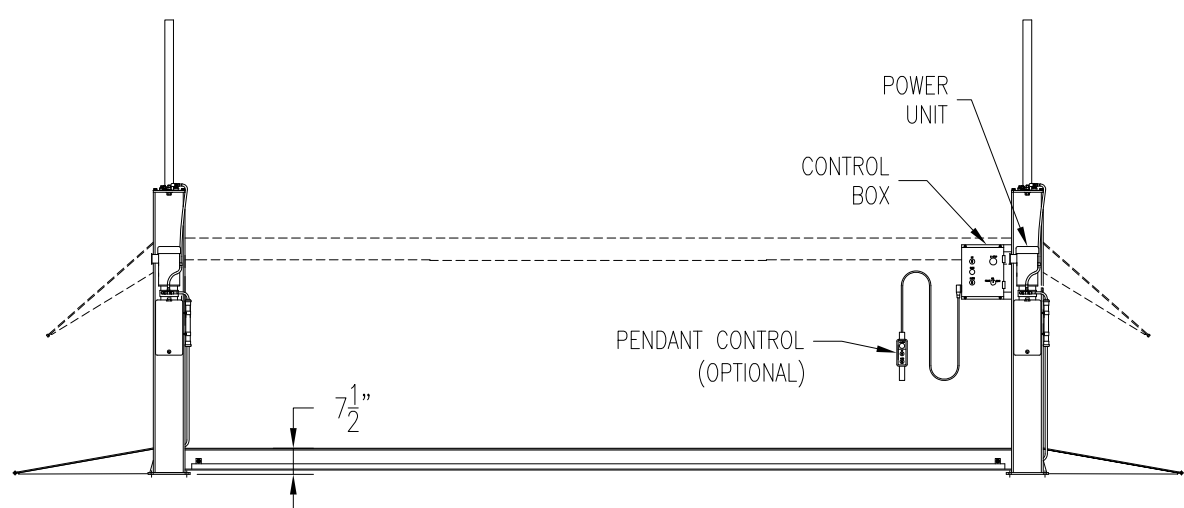


FIG.01