

### SPECIFICATION

CAPACITY		18,000 LBS
FOUR COLUMNS C/W SAFETY DEVICES (MECHANICAL/AIR)		
POWER UNIT C/W EL. MOTOR	STANDARD	2HP, 1PH, 230V
	OPTIONAL	2HP, 3PH, 230/460V
ALIGNMENT RUNWAY 2 PCS	SPEED OF RISE	60 SEC.
	LENGTH	226" (250")
	WIDTH	24"
	HEIGHT	7-1/8"
	WHEELBASE	202"
	LIFTING HEIGHT	67-1/2"
INSIDE COLUMN CLEARANCE		124-3/4"
OVERALL	HEIGHT	77"
	WIDTH	143"
	LENGTH	264-1/2"
OPTIONAL - ROLLING JACKING BEAM		

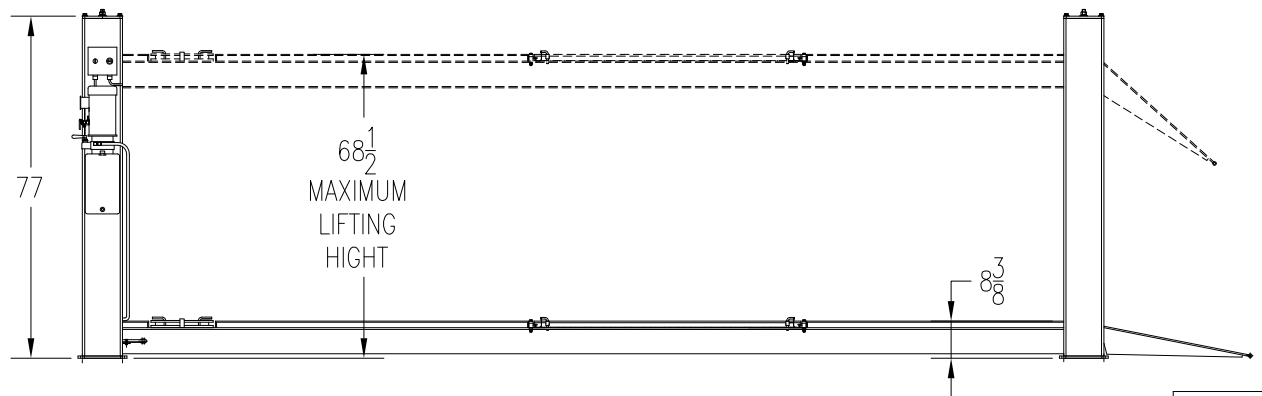
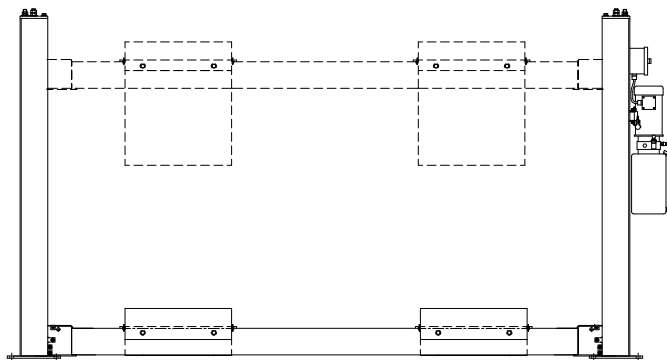
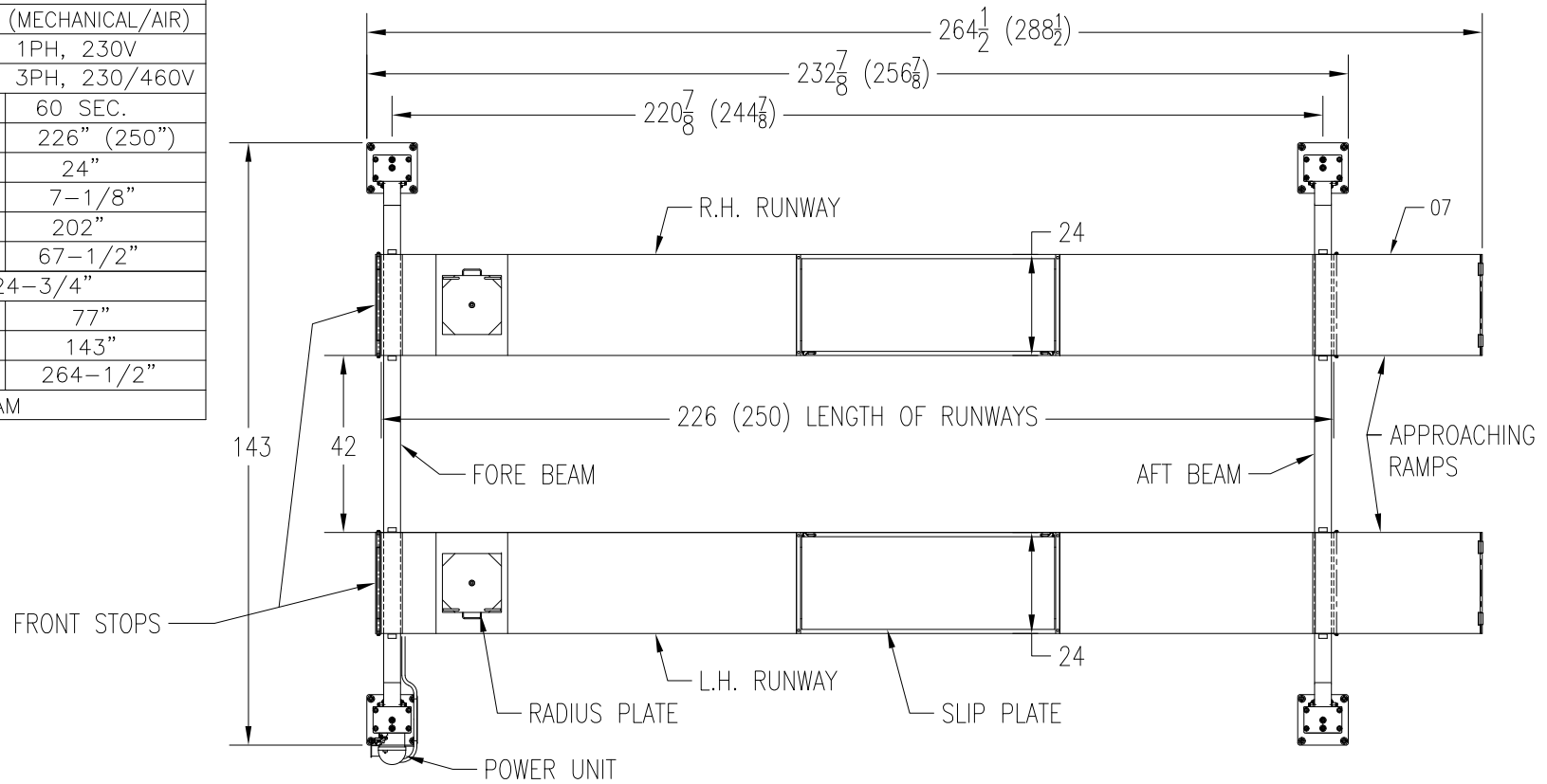
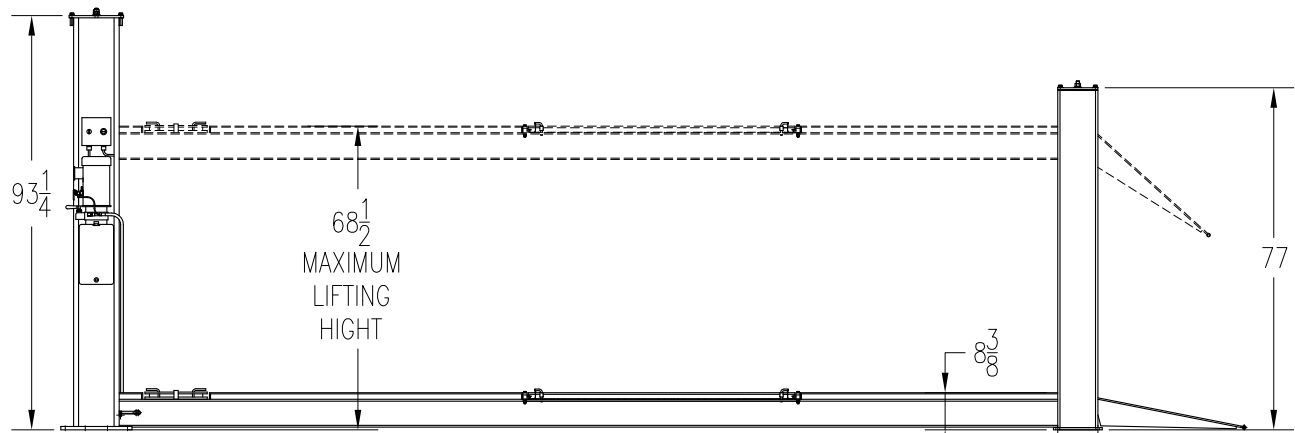
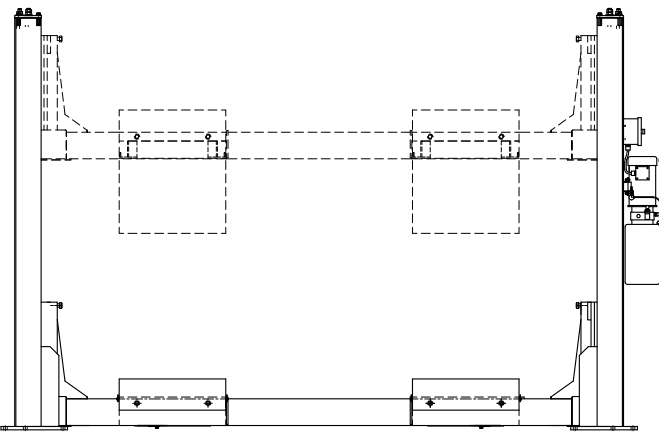
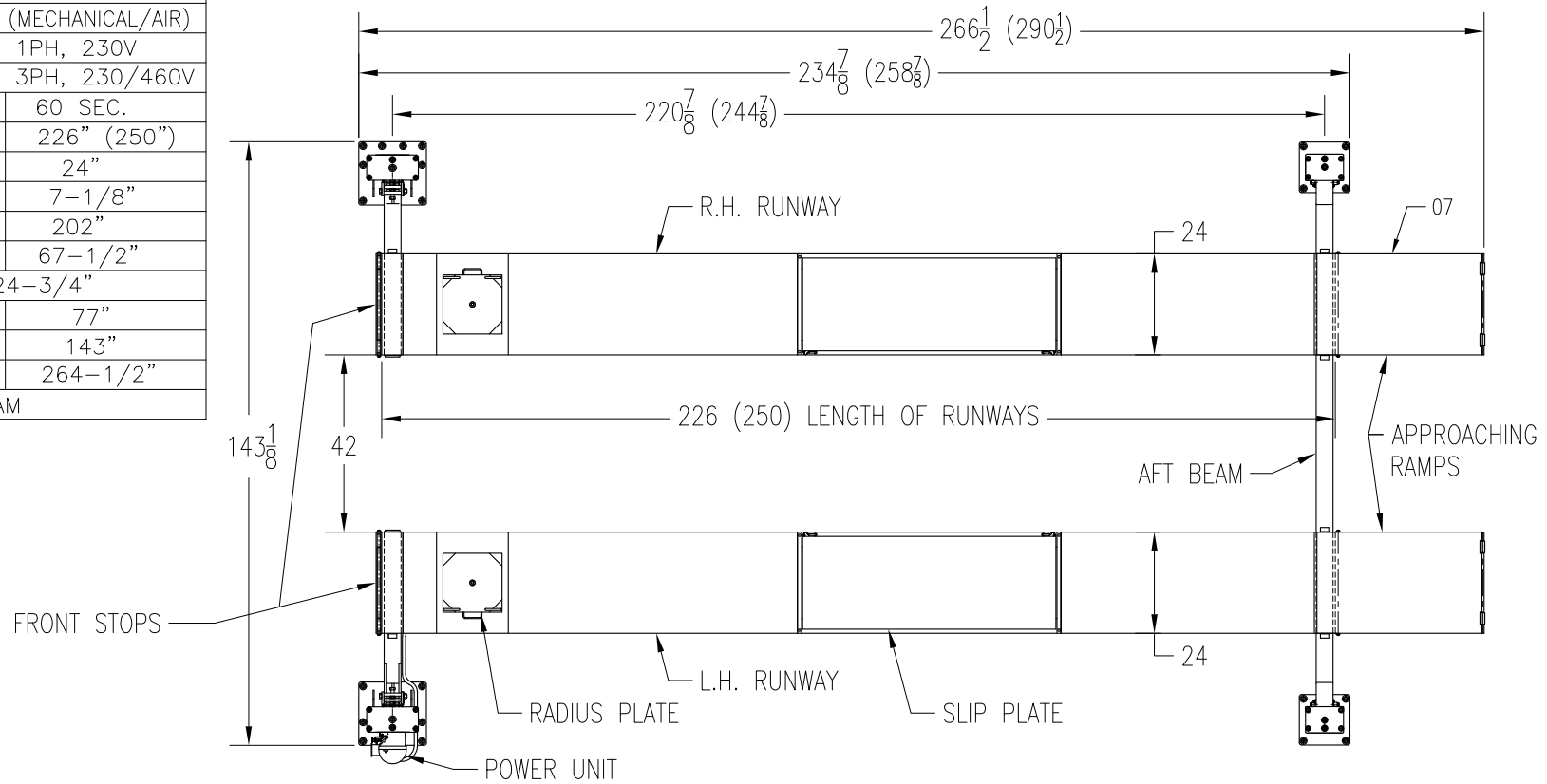


FIG.01



# SPECIFICATION

CAPACITY		18,000 LBS
FOUR COLUMNS C/W SAFETY DEVICES (MECHANICAL/AIR)		
POWER UNIT C/W EL. MOTOR	STANDARD	2HP, 1PH, 230V
	OPTIONAL	2HP, 3PH, 230/460V
ALIGNMENT RUNWAY 2 PCS	SPEED OF RISE	60 SEC.
	LENGTH	226" (250")
	WIDTH	24"
	HEIGHT	7-1/8"
	WHEELBASE	202"
	LIFTING HEIGHT	67-1/2"
INSIDE COLUMN CLEARANCE	124-3/4"	
OVERALL	HEIGHT	77"
	WIDTH	143"
	LENGTH	264-1/2"
OPTIONAL - ROLLING JACKING BEAM		



P K S

4-POST LIFTS SPECIFICATION

MODEL:

PK-18-4-OBA

DATE:

JULY 14/2011

DWG. NO.

PK18.4.OBA.01

A

### SPECIFICATION

CAPACITY		18,000 LBS
FOUR COLUMNS C/W SAFETY DEVICES (MECHANICAL/AIR)		
POWER UNIT C/W EL. MOTOR	STANDARD	2HP, 1PH, 230V
	OPTIONAL	2HP, 3PH, 230/460V
RUNWAY 2 PCS	SPEED OF RISE	60 SEC.
	LENGTH	226" (250")
	WIDTH	24"
	HEIGHT	7-1/8"
	WHEELBASE	202"
	LIFTING HEIGHT	67-1/2"
INSIDE COLUMN CLEARANCE		124-3/4"
OVERALL	HEIGHT	77"
	WIDTH	143"
	LENGTH	264-1/2"
OPTIONAL - ROLLING JACKING BEAM		

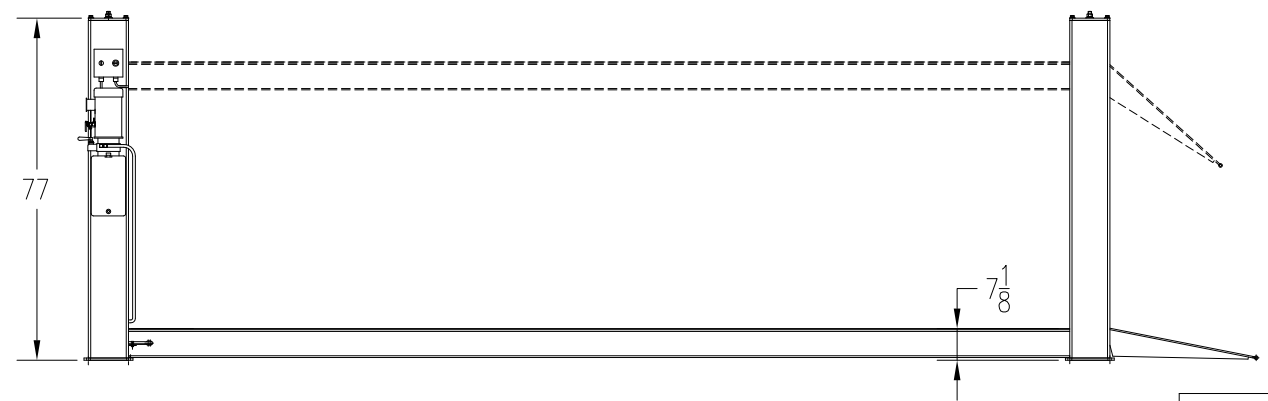
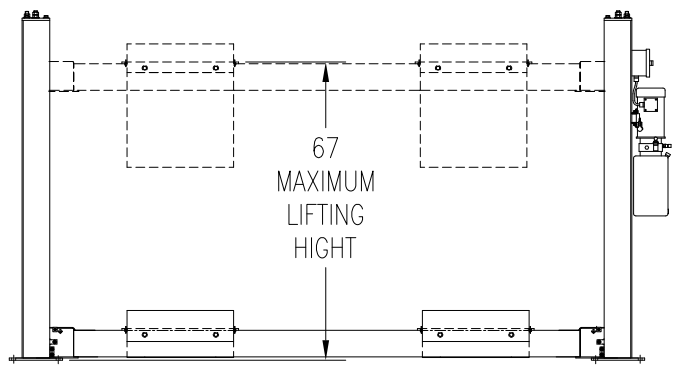
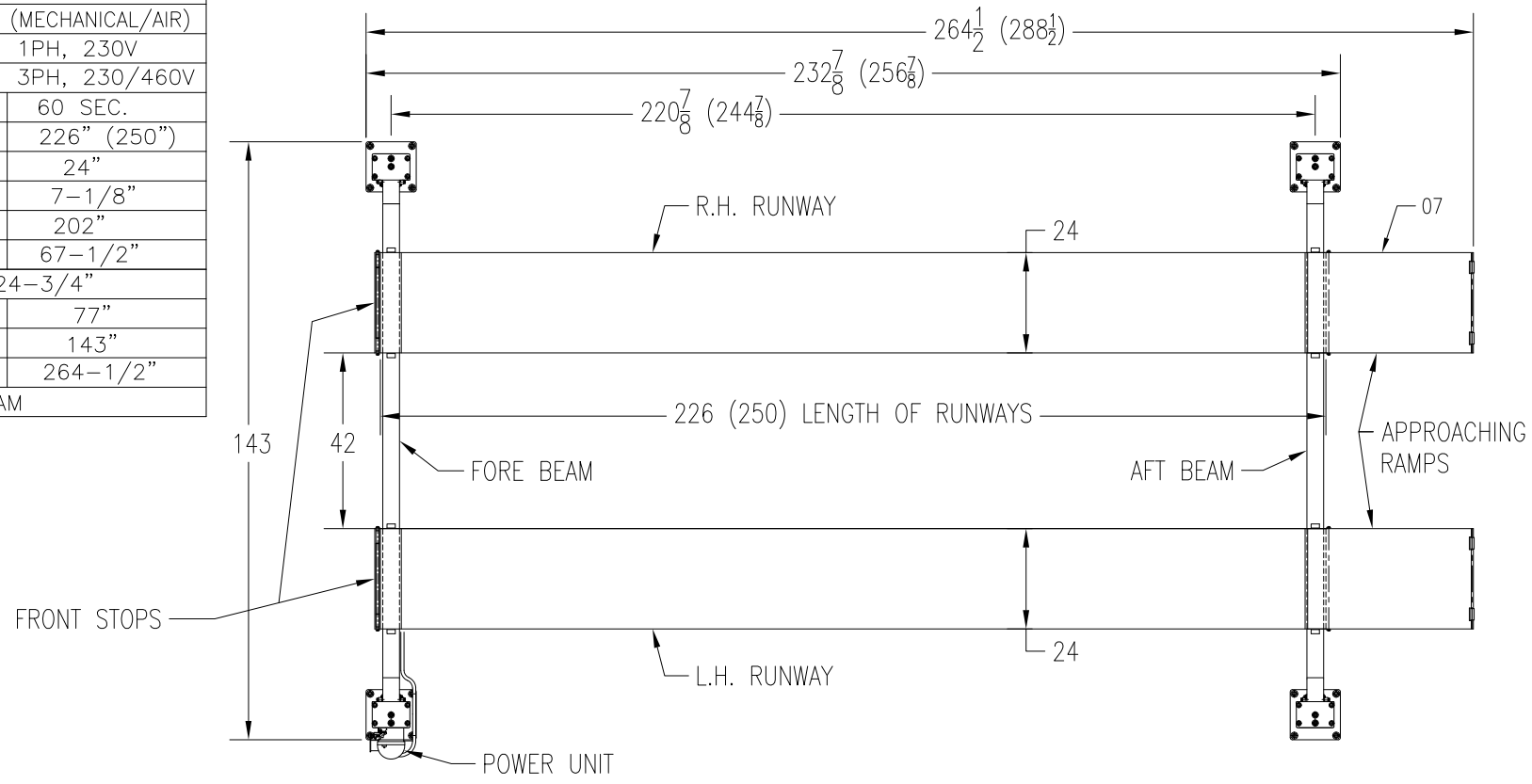


FIG.01