

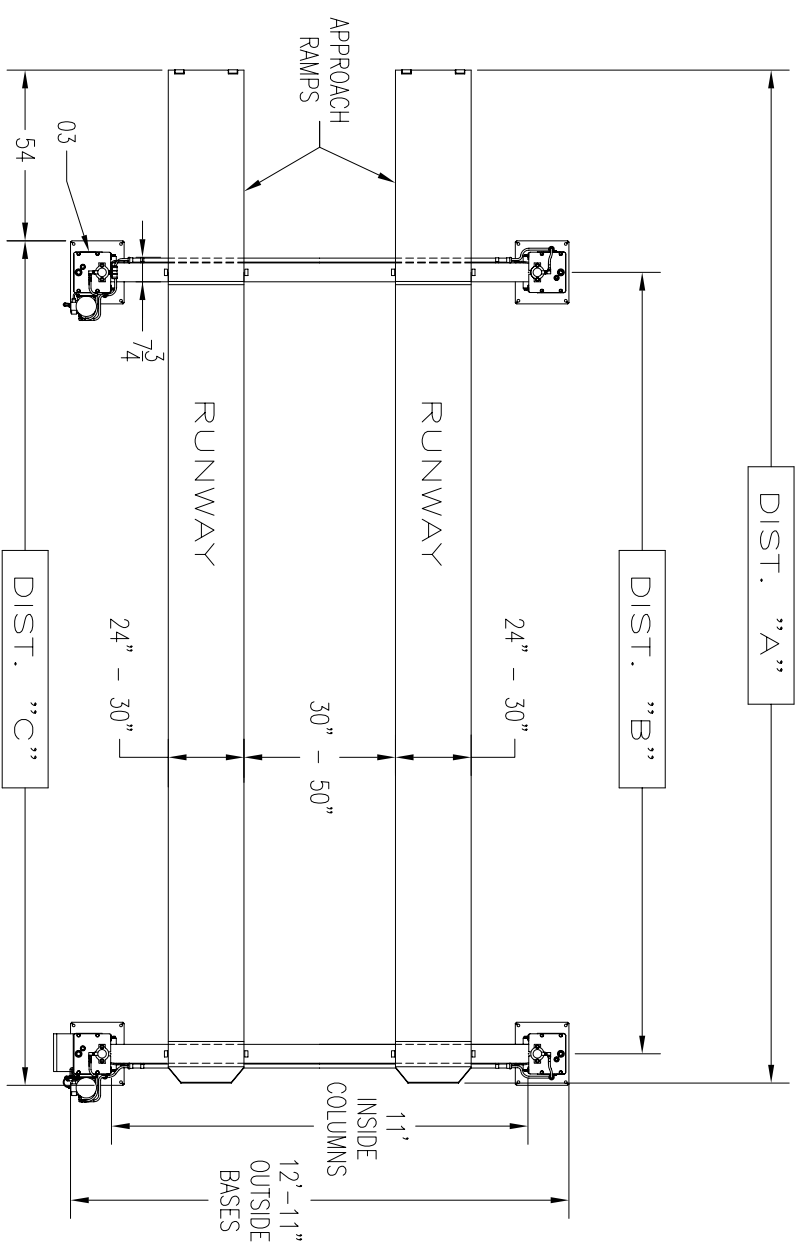
### SPECIFICATION

CAPACITY		30,000LBS	
FOUR COLUMNS C/W HYDRAULIC CYLINDERS			
SAFETY DEVICES ON EACH COLUMN (MECHANICAL/AIR)			
DUAL POWER UNITS C/W EL. MOTORS	STANDARD	2 x 2HP, 3PH, 230/460V	
	OPTIONAL	2 x 2HP, 3PH, 575V	
	OPTIONAL	2 x 2HP, 1PH, 230V	

SPEED OF RISE 72 SEC.

RUNWAY WIDTH 24" - 30"

RUNWAY HEIGHT	DISTANCES		
8-1/2"	"A"	"B"	"C"
MODEL: PK30-4-20	30 1/4"	23 3/4"	24 9/8"
MODEL: PK30-4-21	21' LONG	31 6 1/2"	26 1 1/2"
MODEL: PK30-4-22	22' LONG	32 8 1/2"	27 3/2"
MODEL: PK30-4-24	24' LONG	35 2 1/2"	29 7/2"
MODEL: PK30-4-25	25' LONG	36 4 1/2"	30 9/2"
MODEL: PK30-4-26	26' LONG	37 6 1/2"	32 1/2"
MODEL: PK30-4-27	27' LONG	38 8 1/2"	33 3/2"
MODEL: PK30-4-28	28' LONG	40 0 1/2"	34 5/2"
MODEL: PK30-4-30	30' LONG	42 4 1/2"	35 7/2"
MODEL: PK30-4-31	31' LONG	43 6 1/2"	36 9/2"
MODEL: PK30-4-32	32' LONG	44 8 1/2"	37 1/2"
MODEL: PK30-4-33	33' LONG	46 0 1/2"	38 3/2"
MODEL: PK30-4-34	34' LONG	47 2 1/2"	40 5/2"



INSIDE COLUMN CLEARANCE	11"
OVERALL LIFTING HEIGHT	5'-8 1/2"
OVERALL HEIGHT	11'-11"
OVERALL WIDTH	12'-11"
OPTIONAL - ROLLING JACKING BEAM	

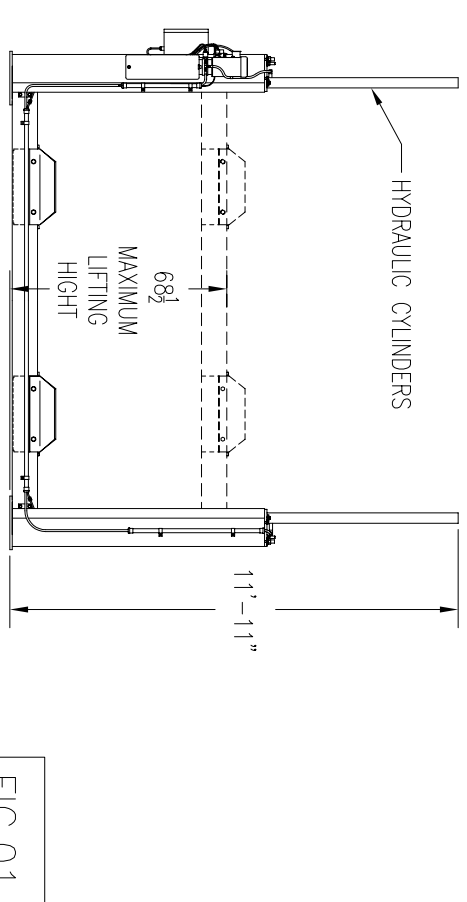
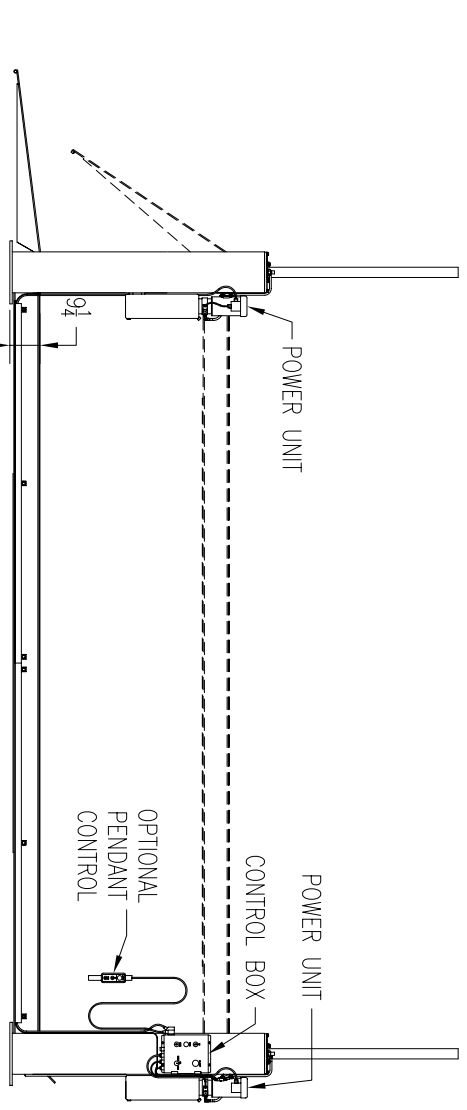
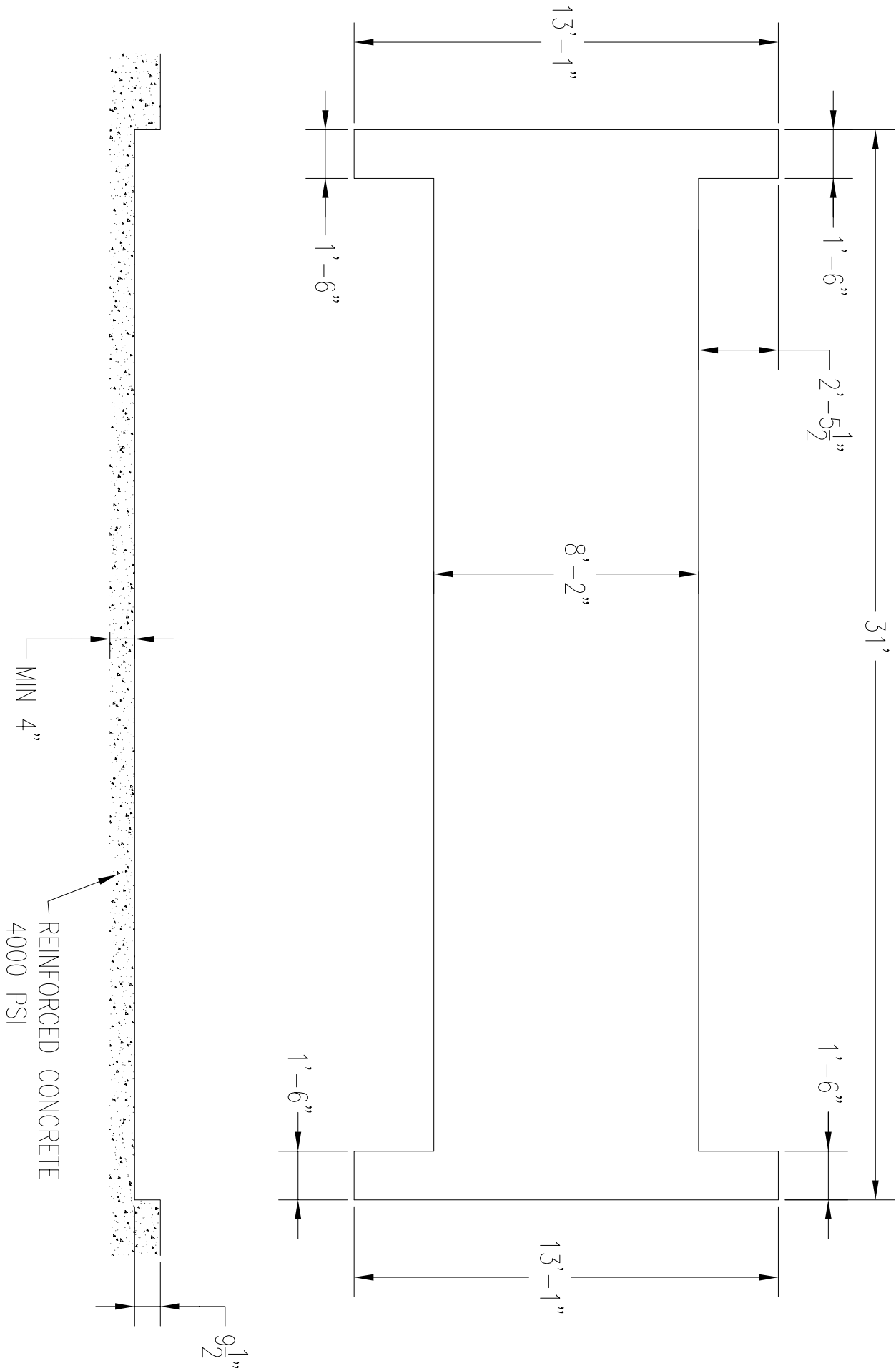


FIG.01

# PK 30-4-30 RECESSED FLOOR DIMENSIONS



### SPECIFICATION

CAPACITY		30,000LBS	
FOUR COLUMNS C/W HYDRAULIC CYLINDERS			
SAFETY DEVICES ON EACH COLUMN (MECHANICAL/AIR)			
DUAL POWER UNITS C/W EL. MOTORS	STANDARD	2 x 2HP, 3PH, 230/460V	
	OPTIONAL	2 x 2HP, 3PH, 575V	
	OPTIONAL	2 x 2HP, 1PH, 230V	

SPEED OF RISE 72 SEC.

RUNWAY WIDTH 24" - 30"

RUNWAY HEIGHT	DISTANCES		
8-1/2"	"A"	"B"	"C"
MODEL: PK30-4-20	304"	233"	249"
MODEL: PK30-4-21	21' LONG	316"	245"
MODEL: PK30-4-22	22' LONG	328"	257"
MODEL: PK30-4-24	24' LONG	352"	281"
MODEL: PK30-4-25	25' LONG	364"	293"
MODEL: PK30-4-26	26' LONG	376"	305"
MODEL: PK30-4-27	27' LONG	388"	317"
MODEL: PK30-4-28	28' LONG	400"	329"
MODEL: PK30-4-30	30' LONG	424"	353"
MODEL: PK30-4-31	31' LONG	436"	365"
MODEL: PK30-4-32	32' LONG	448"	377"
MODEL: PK30-4-33	33' LONG	460"	389"
MODEL: PK30-4-34	34' LONG	472"	401"

RUNWAYS LENGTH	INSIDE COLUMNS		
	11'	12'-11"	OUTSIDE BASES
MODEL: PK30-4-27	27' LONG	388"	333"
MODEL: PK30-4-28	28' LONG	400"	345"
MODEL: PK30-4-30	30' LONG	424"	369"
MODEL: PK30-4-31	31' LONG	436"	381"
MODEL: PK30-4-32	32' LONG	448"	393"
MODEL: PK30-4-33	33' LONG	460"	405"
MODEL: PK30-4-34	34' LONG	472"	417"

INSIDE COLUMN CLEARANCE	11'		
OVERALL LIFTING HEIGHT	5'-8 1/2"		
OVERALL HEIGHT	11'-11"		
OVERALL WIDTH	12'-11"		
OPTIONAL - ROLLING JACKING BEAM			

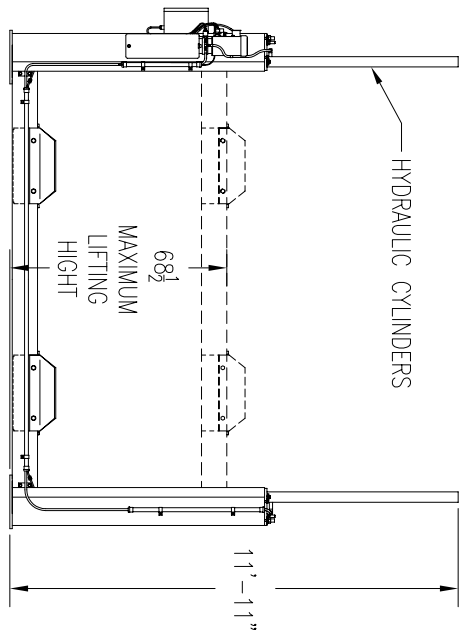
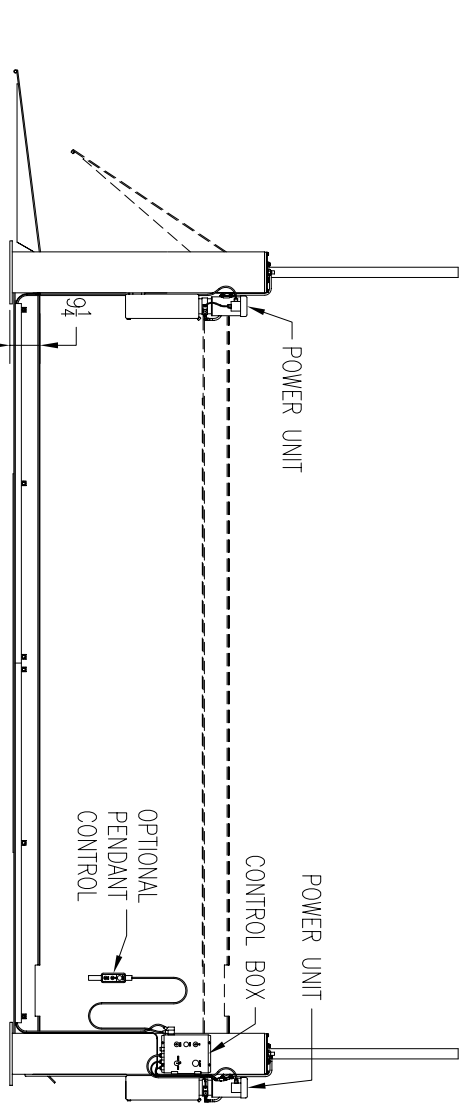
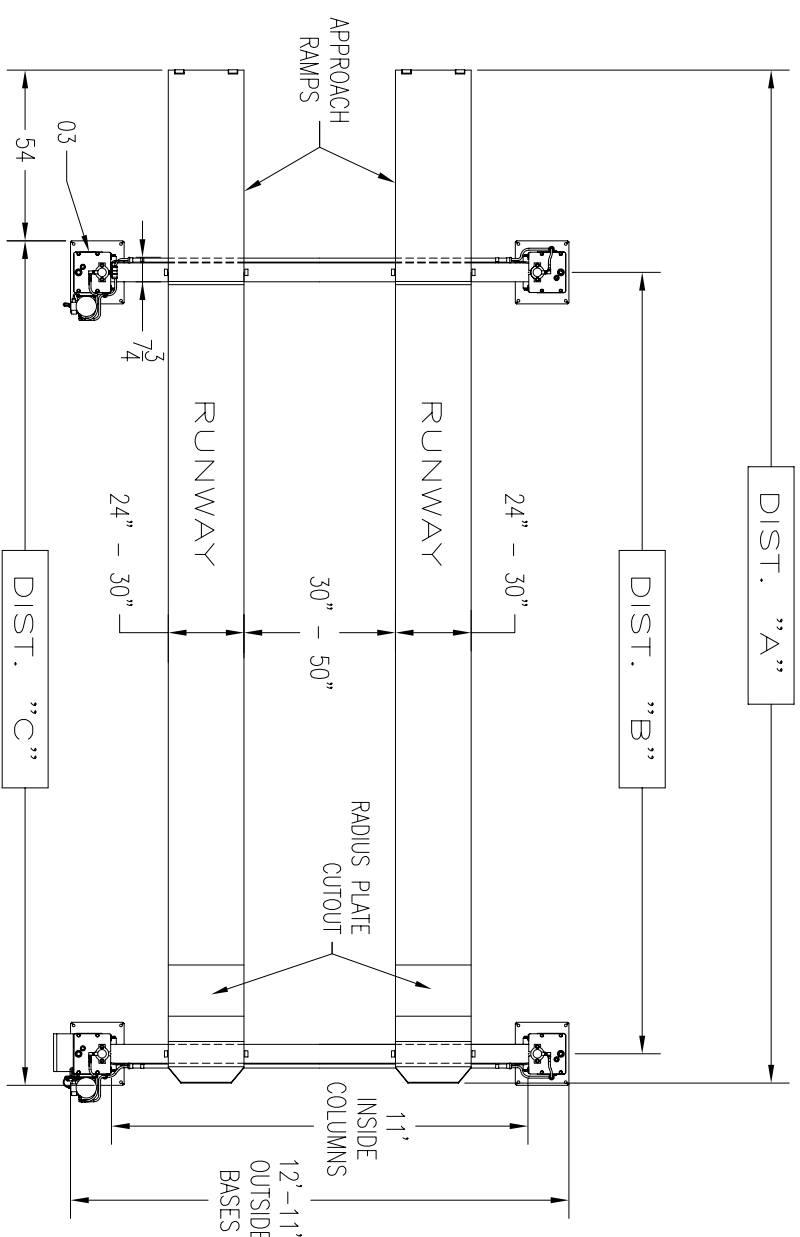


FIG.01

### SPECIFICATION

CAPACITY 40,000LBS  
 FOUR COLUMNS C/W HYDRAULIC CYLINDERS  
 SAFETY DEVICES ON EACH COLUMN (MECHANICAL/AIR)

DUAL POWER UNITS C/W EL. MOTORS

STANDARD	2 x 2HP, 3PH, 230/460V
OPTIONAL	2 x 2HP, 3PH, 575V
OPTIONAL	2 x 2HP, 1PH, 230V

SPEED OF RISE 72 SEC.

RUNWAY WIDTH 24" - 30"

RUNWAY HEIGHT	"A"	"B"	"C"
MODEL: PK30-4-20DT	358"	233"	249"
MODEL: PK30-4-21DT	370"	245"	261"
MODEL: PK30-4-24DT	406"	281"	297"
MODEL: PK30-4-25DT	418"	293"	309"
MODEL: PK30-4-26DT	430"	305"	321"
MODEL: PK30-4-28DT	454"	329"	345"
MODEL: PK30-4-30DT	478"	353"	357"
MODEL: PK30-4-31DT	490"	365"	369"
MODEL: PK30-4-32DT	502"	377"	381"
MODEL: PK30-4-33DT	514"	389"	393"
MODEL: PK30-4-34DT	526"	401"	405"

RUNWAYS

MODEL	LENGTH	INSIDE COLUMN CLEARANCE	OVERALL LIFTING HEIGHT
MODEL: PK30-4-28DT	28' LONG	11'	5'-8 1/2"
MODEL: PK30-4-30DT	30' LONG		11'-11"
MODEL: PK30-4-31DT	31' LONG		12'-11"
MODEL: PK30-4-32DT	32' LONG		
MODEL: PK30-4-33DT	33' LONG		
MODEL: PK30-4-34DT	34' LONG		

INSIDE COLUMN CLEARANCE 11'

OVERALL LIFTING HEIGHT 5'-8 1/2"

OVERALL HEIGHT 11'-11"

OVERALL WIDTH 12'-11"

OPTIONAL - ROLLING JACKING BEAM

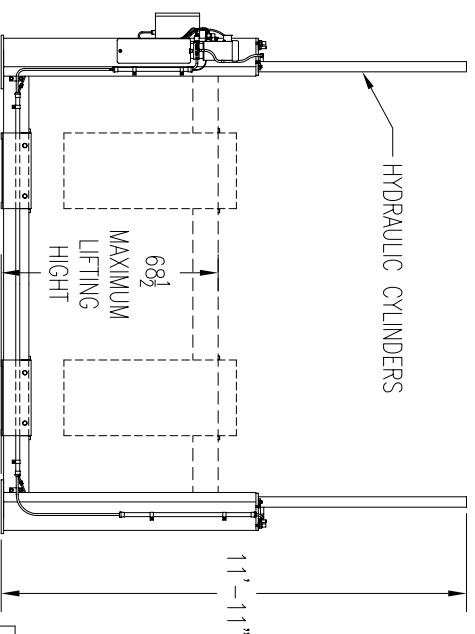
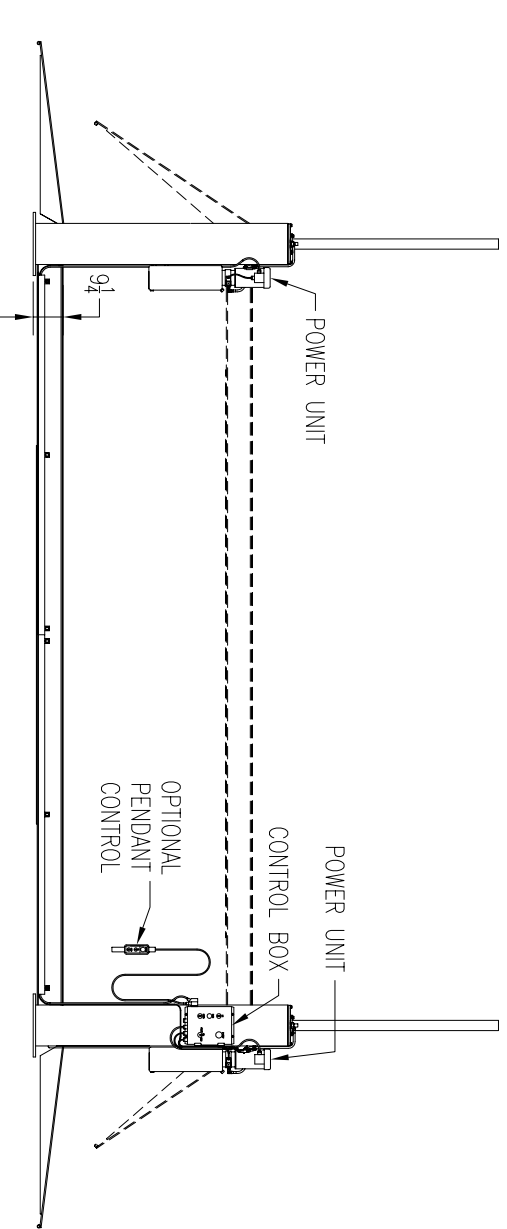
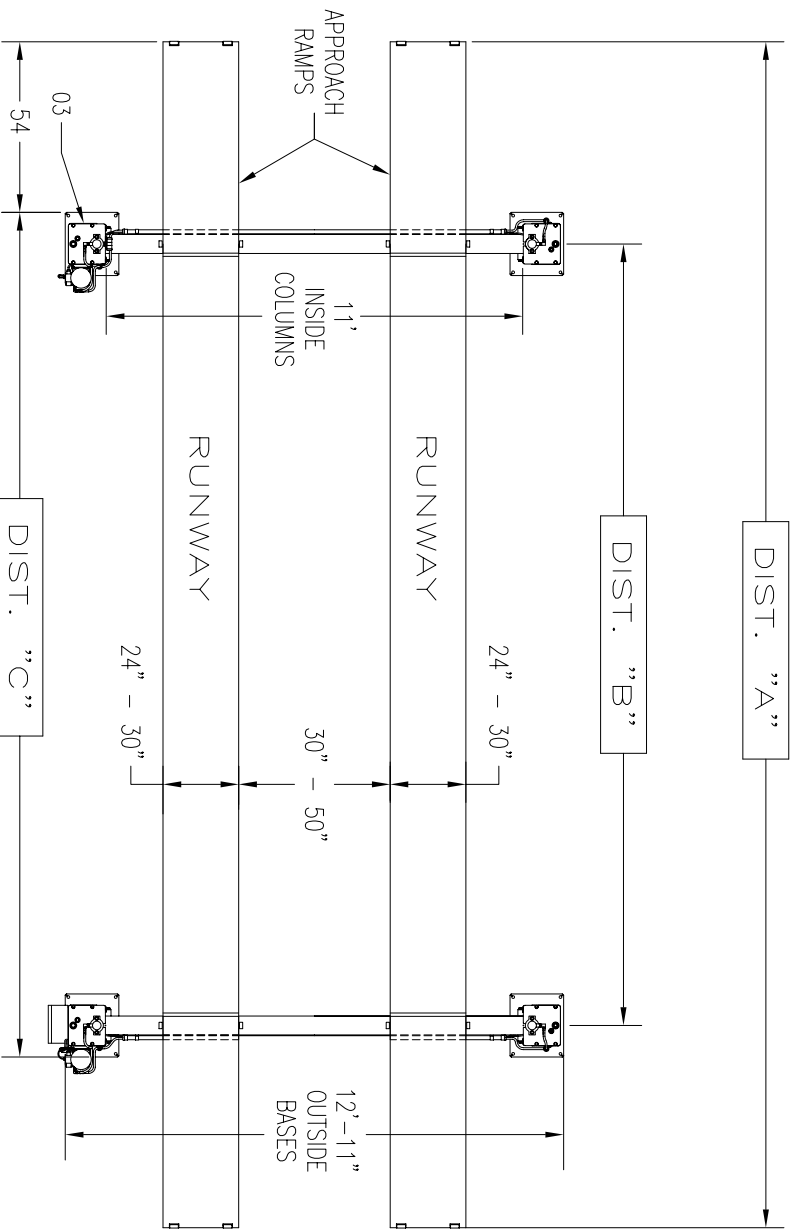


FIG.01.DT