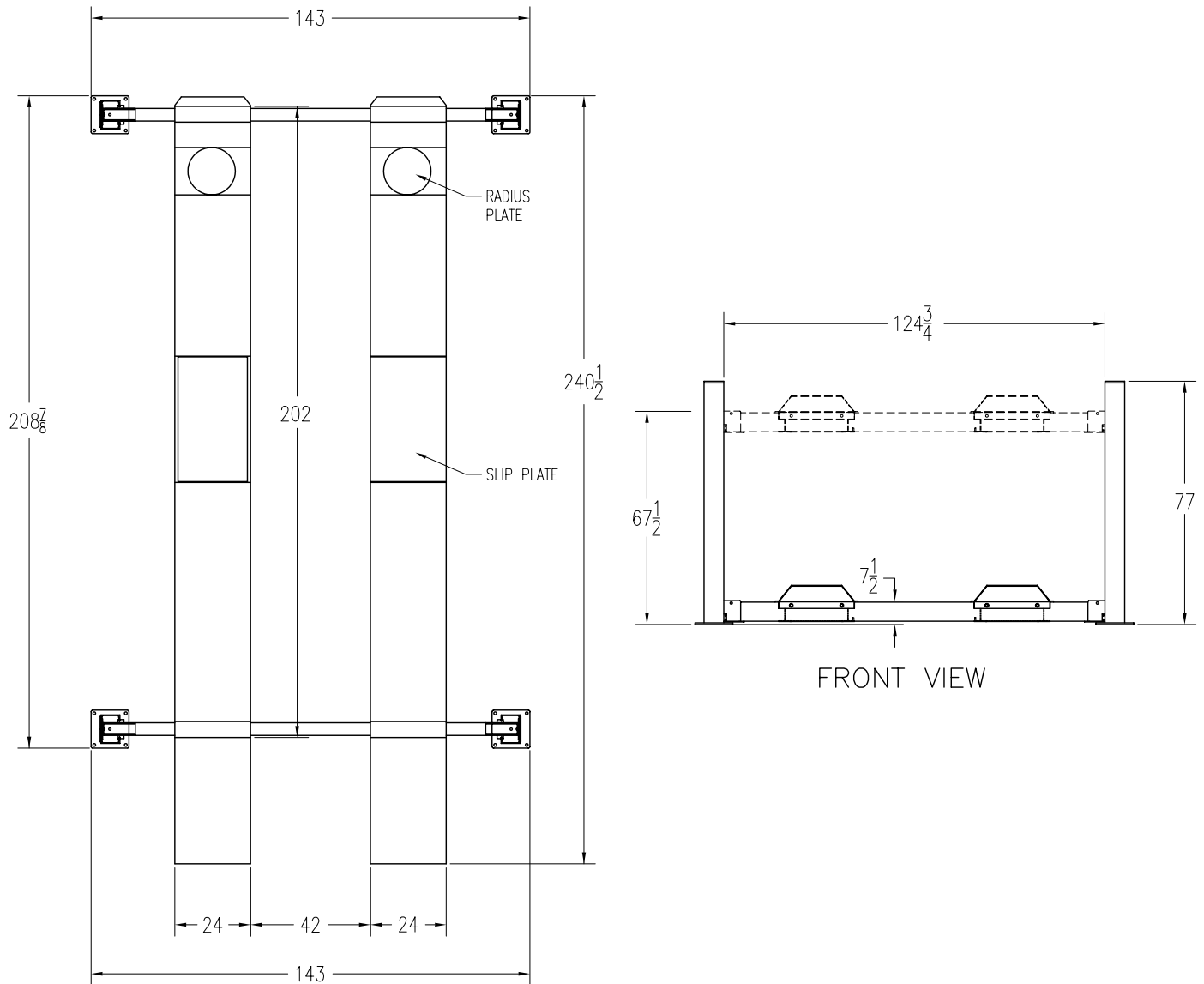


# FOUR POST LIFT

## PK18-4-17-A



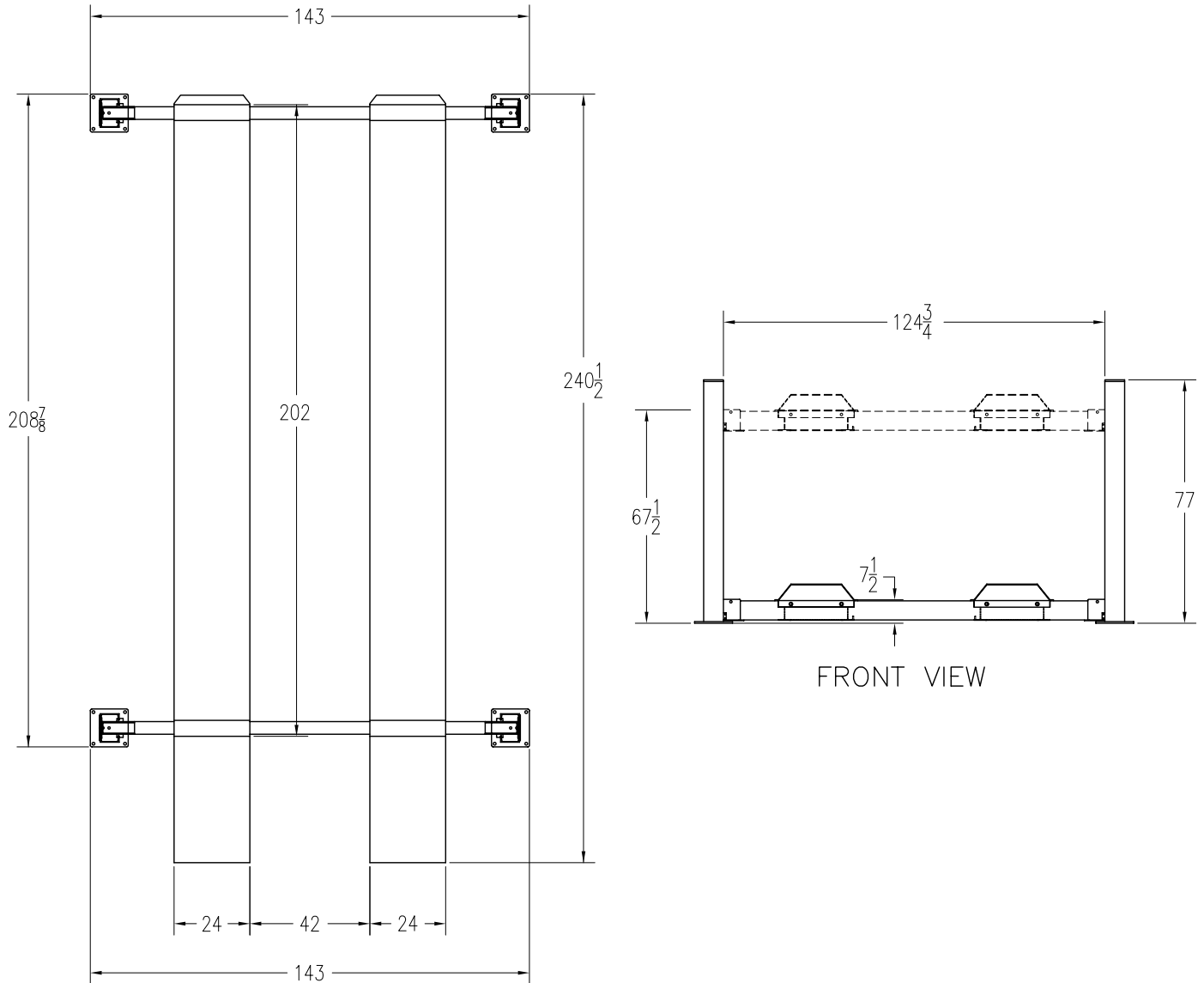
### SPECIFICATION

CAPACITY	18,000 LBS	RUNWAY HEIGHT	7-1/2"
INSIDE COLUMN CLEARANCE	148-3/4"	RUNWAY WIDTH	24"
MECHANICAL SAFETY LOCK ON EACH COLUMN		OVERALL HEIGHT	77"
ELECTRICAL	2HP 208-230 V, SINGLE PHASE	OVERALL WIDTH	143"
OPTIONAL	208-230 V, 3PH	OVERALL LIFTING HEIGHT	67-1/2"
SPEED OF RISE	60 SEC.	MAX 2 WHEEL ALIGNMENT	- 170"
RUNWAY LENGTH	202"	4 WHEEL ALIGNMENT	86" - 136"

P	K	S	MAR.02/2007	DWG	PK184S202A	A
---	---	---	-------------	-----	------------	---

# FOUR POST LIFT

## PK18-4-17-S



### SPECIFICATION

CAPACITY	18,000 LBS	RUNWAY LENGTH	202"
WHEELBASE	178"	RUNWAY HEIGHT	7-1/2"
INSIDE COLUMN CLEARANCE	124-3/4"	RUNWAY WIDTH	24"
MECHANICAL SAFETY LOCK ON EACH COLUMN		OVERALL HEIGHT	77"
ELECTRICAL	2HP 208-230 V, SINGLE PHASE	OVERALL WIDTH	143"
OPTIONAL	208-230 V, 3PH	OVERALL LIFTING HEIGHT	67-1/2"
SPEED OF RISE	60 SEC.	OPTIONAL - ROLLING JACKING BEAM	

P K S

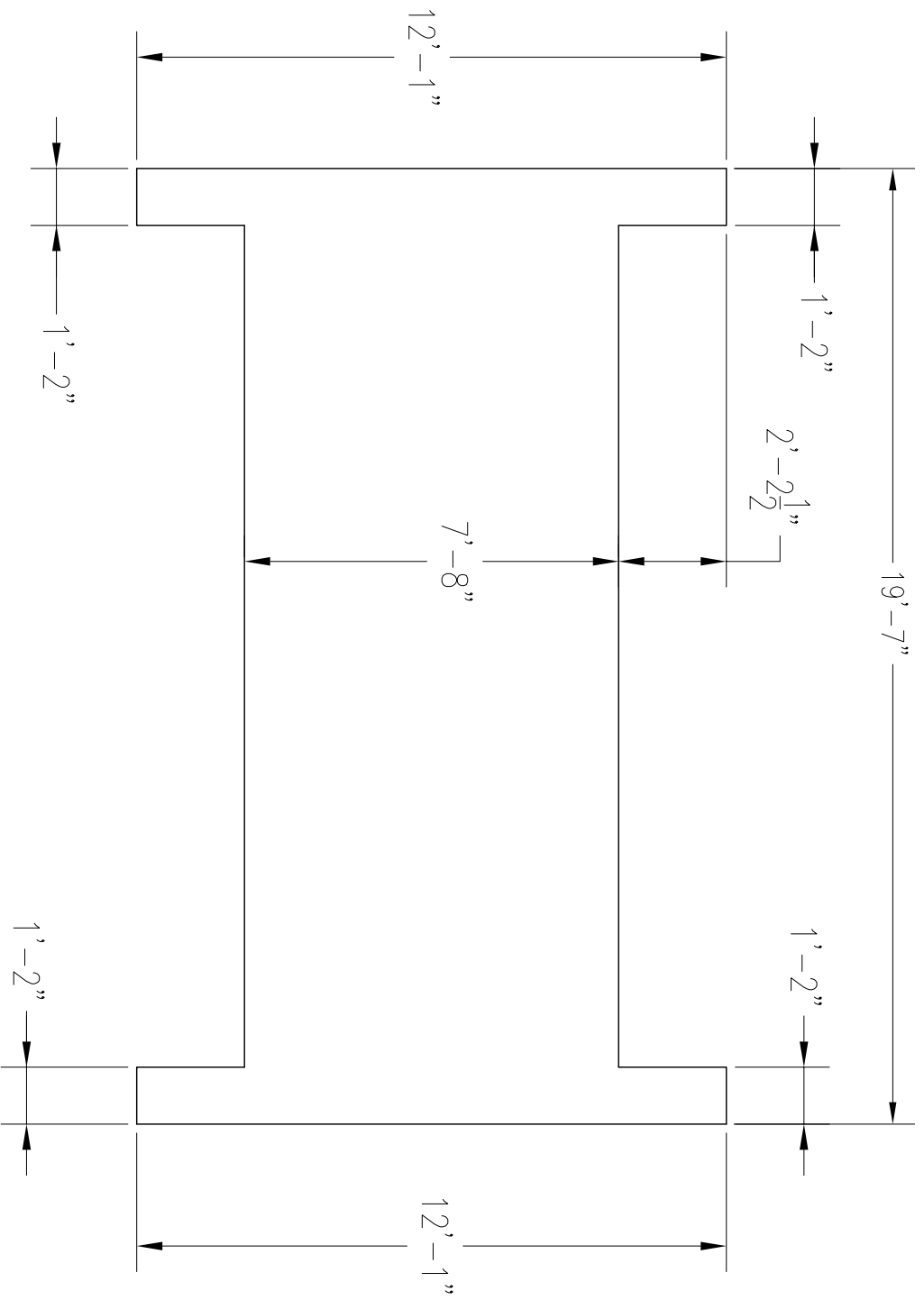
MAR.02/2007

DWG

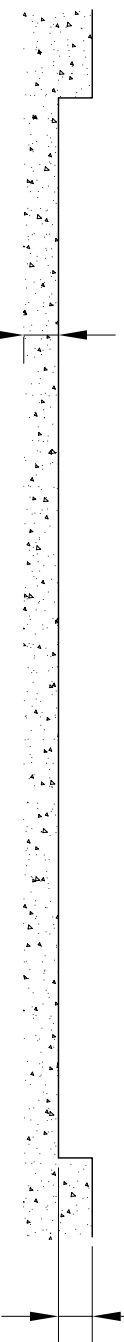
PK184S202

A

# PK18-4-19 RECESSED FLOOR DIMENSIONS

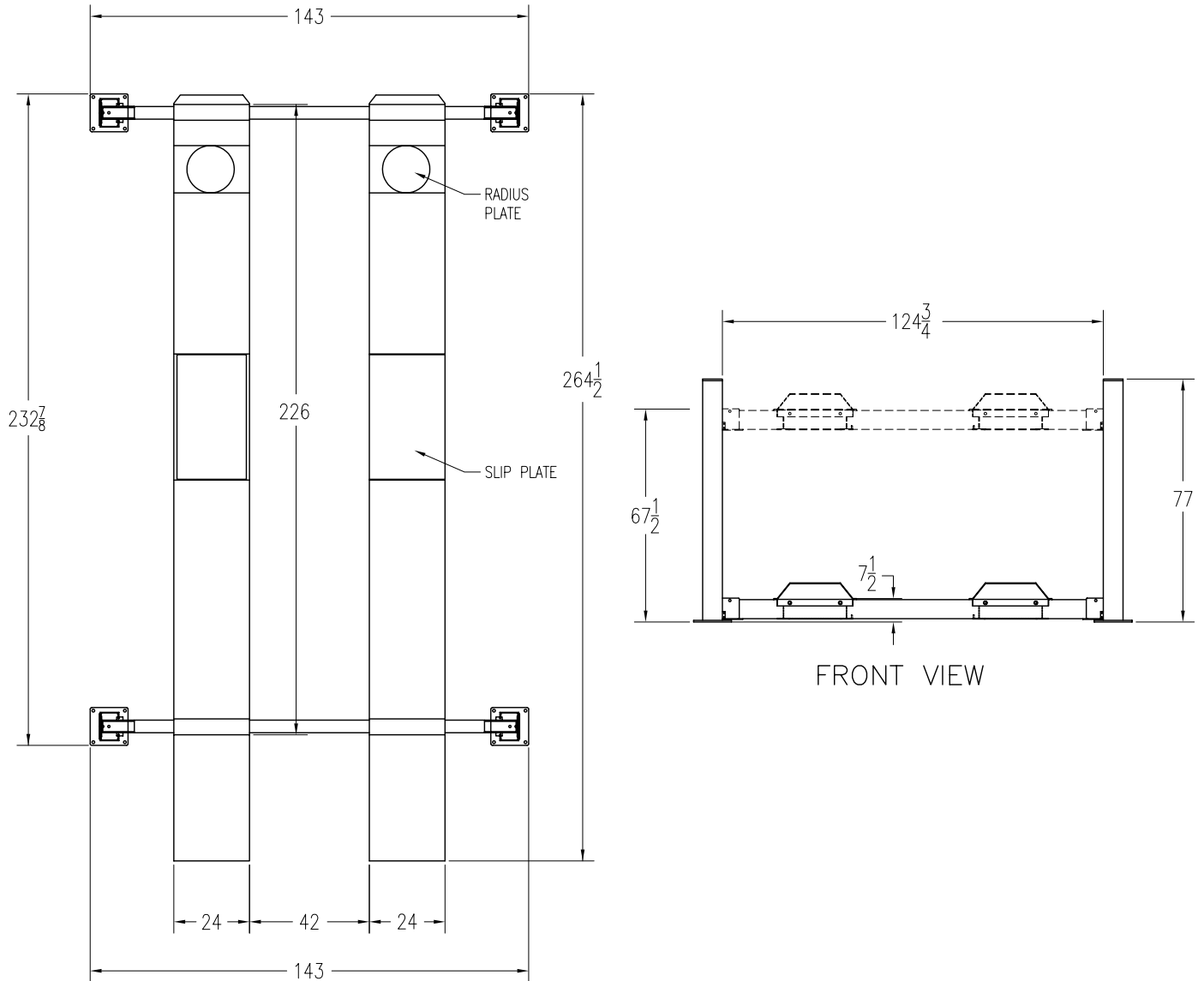


MIN 4" REINFORCED CONCRETE



# FOUR POST LIFT

## PK18-4-19-A



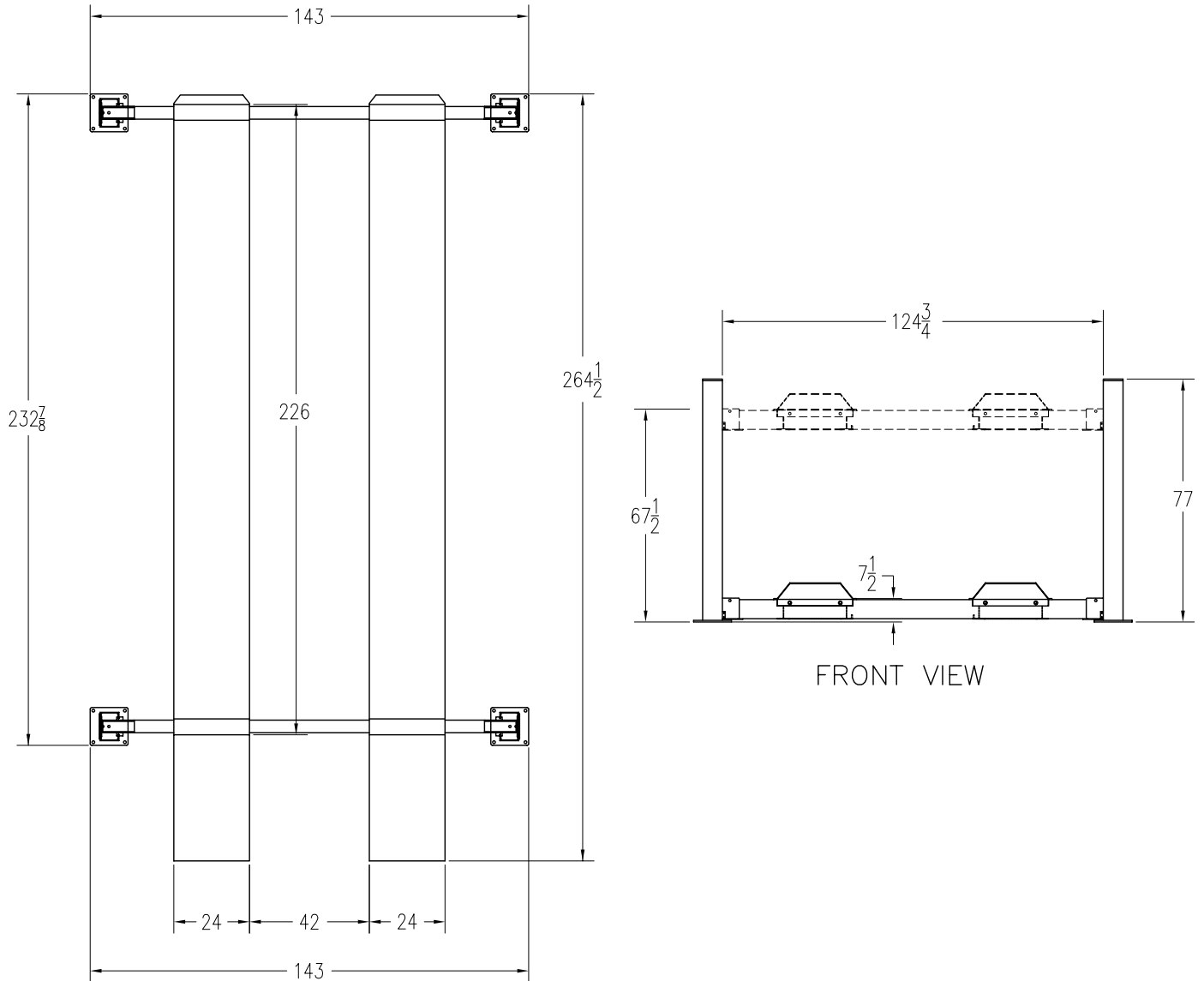
### SPECIFICATION

CAPACITY	18,000 LBS	RUNWAY HEIGHT	7-1/2"
INSIDE COLUMN CLEARANCE	148-3/4"	RUNWAY WIDTH	24"
MECHANICAL SAFETY LOCK ON EACH COLUMN		OVERALL HEIGHT	77"
ELECTRICAL	2HP 208-230 V, SINGLE PHASE	OVERALL WIDTH	143"
OPTIONAL	208-230 V, 3PH	OVERALL LIFTING HEIGHT	67-1/2"
SPEED OF RISE	60 SEC.	MAX 2 WHEEL ALIGNMENT	- 194"
RUNWAY LENGTH	226"	4 WHEEL ALIGNMENT	86" - 136"

P	K	S	MAR.02/2007	DWG	PK184S226A	A
---	---	---	-------------	-----	------------	---

# FOUR POST LIFT

## PK18-4-19-S



### SPECIFICATION

CAPACITY	18,000 LBS	RUNWAY LENGTH	226"
WHEELBASE	202"	RUNWAY HEIGHT	7-1/2"
INSIDE COLUMN CLEARANCE	148-3/4"	RUNWAY WIDTH	24"
MECHANICAL SAFETY LOCK ON EACH COLUMN		OVERALL HEIGHT	77"
ELECTRICAL	2HP 208-230 V, SINGLE PHASE	OVERALL WIDTH	143"
OPTIONAL	208-230 V, 3PH	OVERALL LIFTING HEIGHT	67-1/2"
SPEED OF RISE	60 SEC.	OPTIONAL - ROLLING JACKING BEAM	

P K S

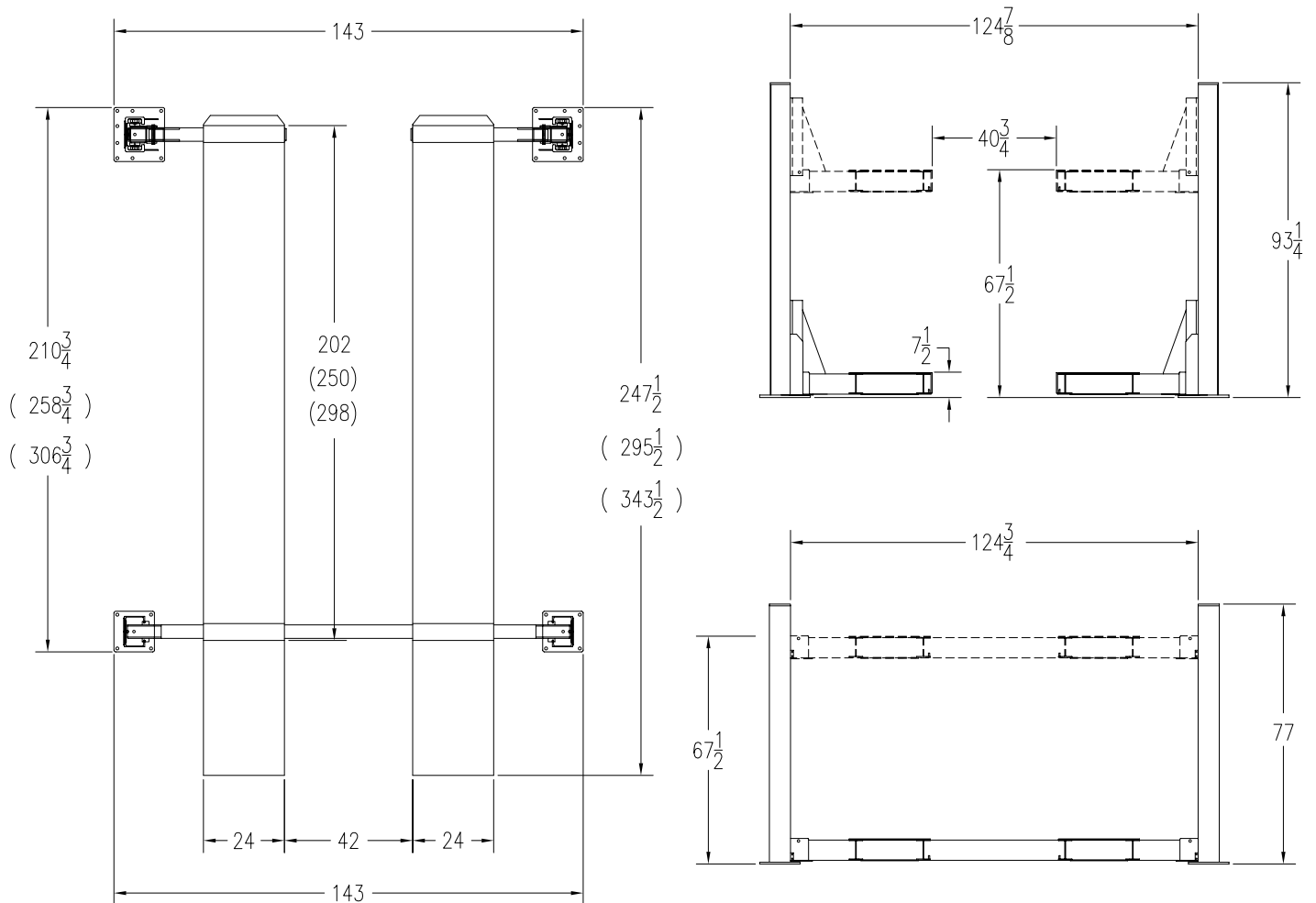
MAR.02/2007

DWG

PK184S226

A

# FOUR POST LIFT OPEN FRONT BEAM PK18-4-OB

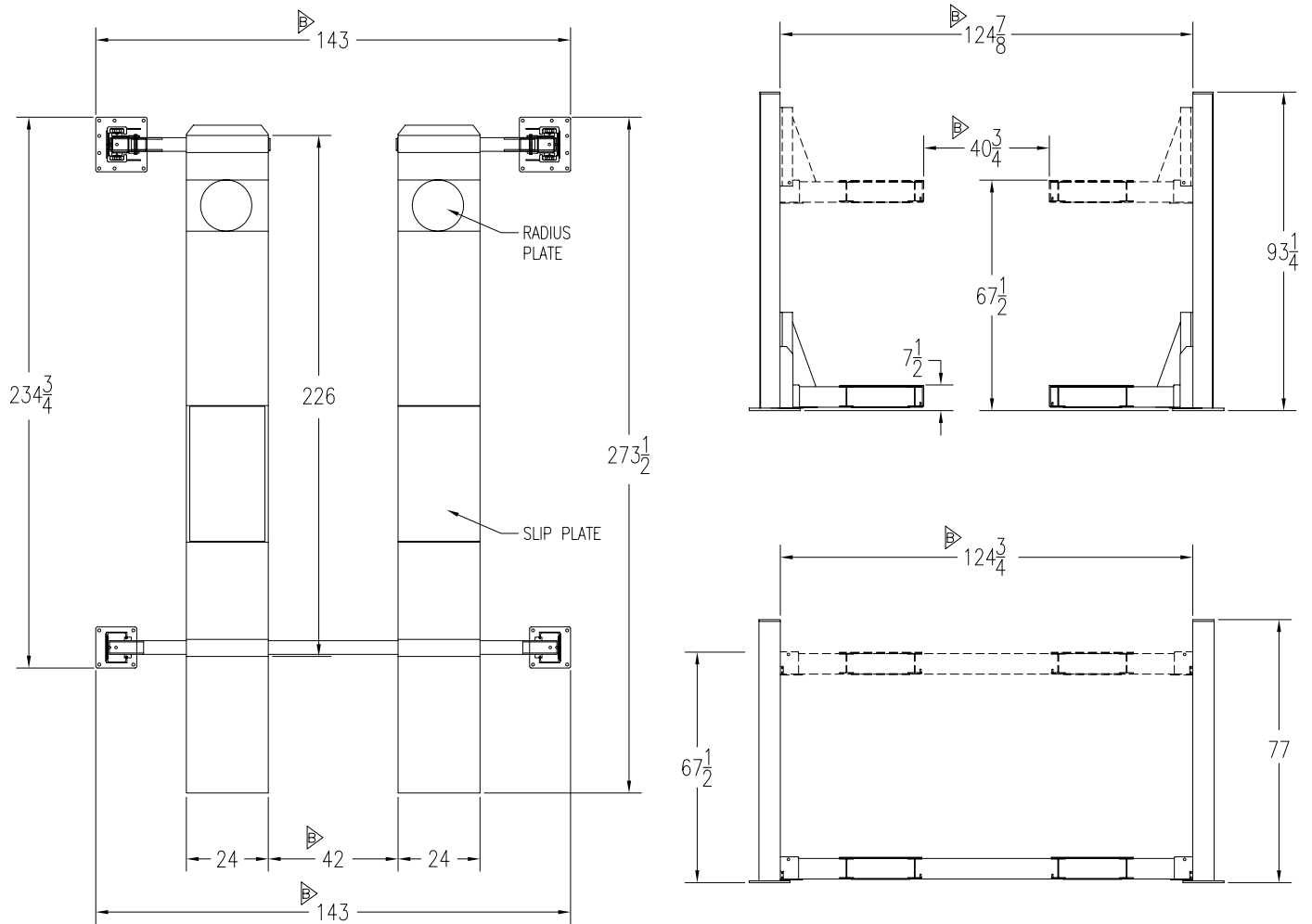


## SPECIFICATION

CAPACITY	18,000 LBS	INSIDE COLUMN CLEARANCE	124-3/4'
LIFT TRUCK MAST CHANNEL ON FRONT COLUMNS		RUNWAY HEIGHT	7-1/2
ADJUSTABLE LEVEL ON FRONT BEAMS		RUNWAY WIDTH	24"
MECHANICAL SAFETY LOCK ON EACH COLUMN		OVERALL HEIGHT	93-1/4"
ELECTRICAL 2HP 208-230 V, SINGLE PHASE		OVERALL WIDTH	143"
SPEED OF RISE	60 SEC	OVERALL LIFTING HEIGHT	67-1/2"
WHEELBASE 178" (250" - 226")		OPTIONAL -298" RUNWAY	
OPTIONAL -208-230 V, 3PH		OPTIONAL - ROLLING JACKING BEAM	

P K S	DEC.11/2006	DWG PK18.4.OB-FIG.1	A
-------	-------------	------------------------	---

# FOUR POST ALIGNMENT LIFT OPEN FRONT BEAM PK18-4-OBA-19



## SPECIFICATION

CAPACITY	18,000 LBS	INSIDE COLUMN CLEARANCE	124-3/4'
LIFT TRUCK MAST CHANNEL ON FRONT COLUMNS		RUNWAY HEIGHT	7-1/2"
ADJUSTABLE LEVEL ON FRONT BEAMS		RUNWAY WIDTH	24"
MECHANICAL SAFETY LOCK ON EACH COLUMN		OVERALL HEIGHT	93-1/4"
ELECTRICAL 2HP 208-230 V, SINGLE PHASE		OVERALL WIDTH	143"
SPEED OF RISE	60 SEC.	OVERALL LIFTING HEIGHT	67-1/2"
WHEELBASE	202"	MAX 2 WHEEL ALIGNMENT	194"
OPTIONAL	208-230V, 3PH	4 WHEEL ALIGNMENT	86" - 136"

P K S

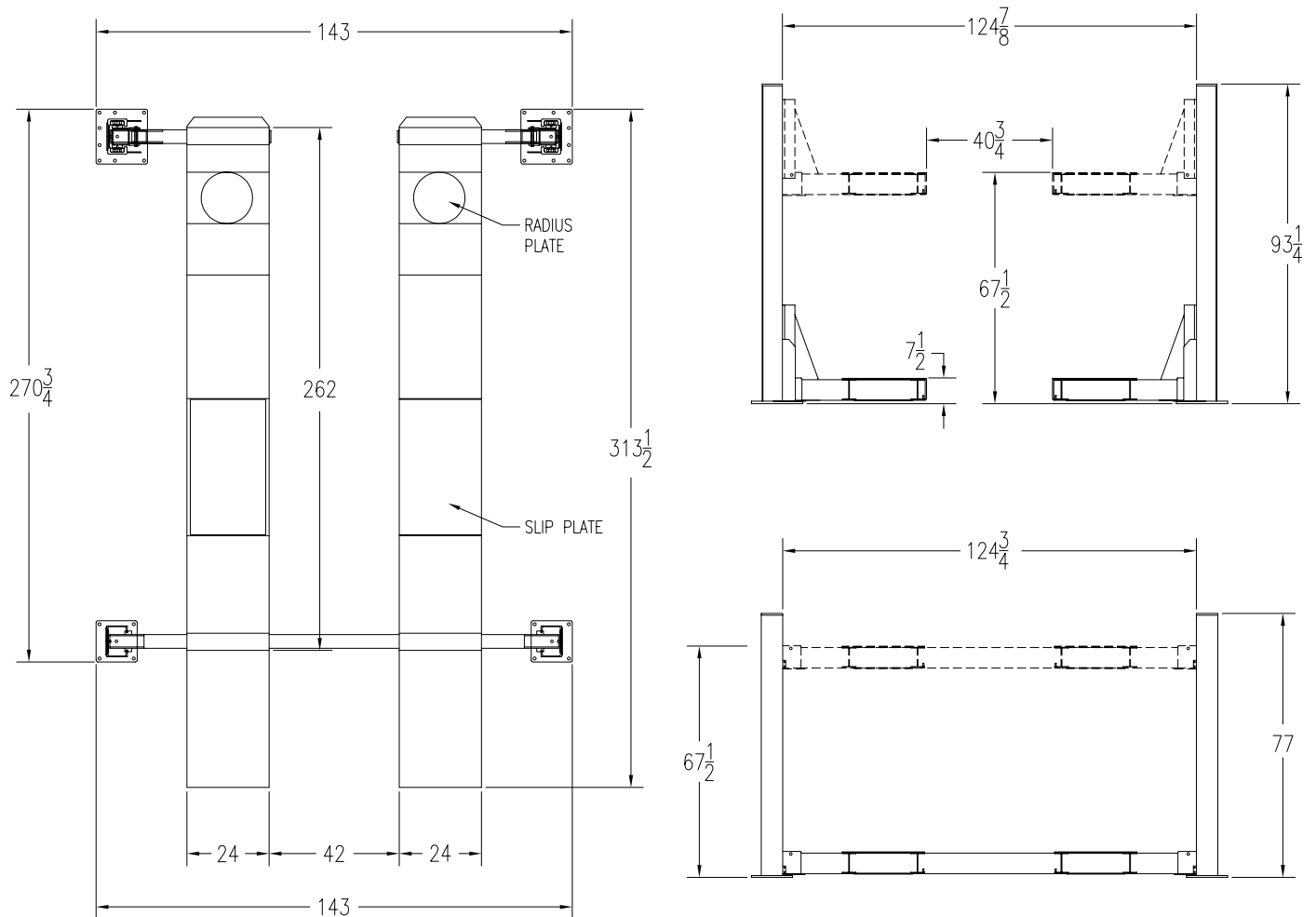
JUNE 02/2005

DWG

FIG.1-226

B

# FOUR POST ALIGNMENT LIFT OPEN FRONT BEAM PK18-4-OBA-22



## SPECIFICATION

CAPACITY	18,000 LBS	INSIDE COLUMN CLEARANCE	124-3/4'
LIFT TRUCK MAST CHANNEL ON FRONT COLUMNS		RUNWAY HEIGHT	7-1/2"
ADJUSTABLE LEVEL ON FRONT BEAMS		RUNWAY WIDTH	24"
MECHANICAL SAFETY LOCK ON EACH COLUMN		OVERALL HEIGHT	93-1/4"
ELECTRICAL 2HP 208-230 V, SINGLE PHASE		OVERALL WIDTH	143"
SPEED OF RISE	60 SEC.	OVERALL LIFTING HEIGHT	67-1/2"
WHEELBASE	238"	MAX 2 WHEEL ALIGNMENT	230"
OPTIONAL	208-230V, 3PH	4 WHEEL ALIGNMENT	86" - 136"

P K S

DEC.20/2005

DWG

FIG.1-262

A